

气动攻丝机系列：操作简单，重复定位精确、切削速度快、生产效率高。本产品由平衡杆、气源处理器、气动马达、带过载保护安全扭力夹头四大部分组成。气动马达、夹头、齿轮、叶片及气源处理器等全部采用台湾进口部件，性能优良、持久耐用。安全夹头带扭力调节，能适应不同丝锥，不同材质的工件，通孔、盲孔丝锥不断、丝牙精度高。

**气动攻丝机适用工件材料：**可以在铅、铜、A3钢、铸铁、生铁、Q235、45号钢、S136模具钢、718模具钢、王牌料、NAK80模具钢等金属材料实现轻松攻丝作业。

气动攻丝机适用于所有机械制造行业，机床、模具、塑胶机械、印刷机械、包装机械制造厂、工程机械、汽车摩托车零部件、航空发动机、机车车辆、烟草机械以及通用机械等行业。

### 产品特点

- 1、重复定位迅速，切削速度快，生产效率高；
- 2、安全扭力夹头保证丝锥损伤少；通孔、盲孔丝锥不断，丝牙精度高；
- 3、工作活动范围大，较重的工件无需移动；
- 4、操作简单，重量轻、效率高、工作强度低，适合各种轻重作业。

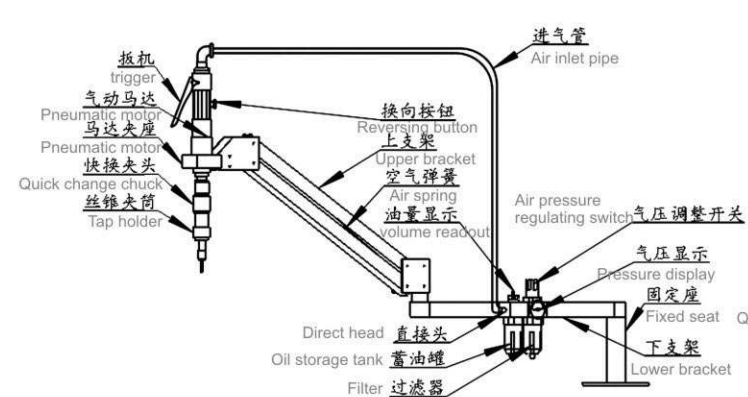
Pneumatic tapping machine series: simple, repetitive positioning accuracy, fast cutting speed, high production efficiency. This product by the balance bar, gas source processor, a pneumatic motor, with overload protection safety torque chuck four parts. Pneumatic motor, chuck, gear, blade and air source processor used in all Taiwan imported components, excellent performance, durable. Safety chuck with torque adjustment, can adapt to different taps, the work of different materials, through holes, blind holes, high precision thread tap.

**Pneumatic tapping machine for workpiece material: in the lead, copper, steel, cast iron, cast iron, A3 Q235, S136 No. 45 steel, die steel, die steel, 718 ace material, NAK80 die steel and other metal materials to achieve easy tapping operation.**

Pneumatic tapping machine is applicable to all the machinery manufacturing industry, machine tool, mould, plastic machinery, printing machinery, packaging machinery manufacturing, engineering machinery, automobile and motorcycle parts, aircraft engines locomotivestobacco machinery and general machinery industry.

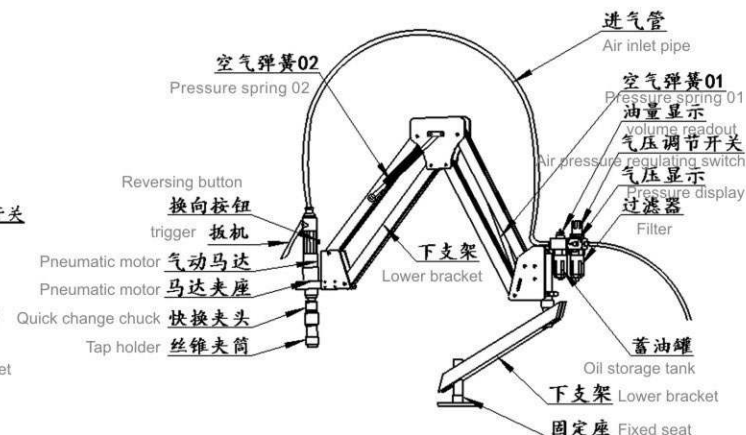
### Product features

- 1, repeated positioning quickly, cutting speed, high production efficiency;
- 2, the safety guarantee of less damage to tap the torsion Jane clip; a through hole and blind hole tap, thread high precision;
- 3, the scope of work is large, the weight of the workpiece does not need to move;
- 4, the operation is simple, light weight, high efficiency, low work intensity, suitable for all kinds of light and heavy work.



气动攻丝机结构示意图

Pneumatic tapping machine structure diagram



长臂气动攻丝机结构示意图

The long arm pneumatic tapping machine structure diagram

## 气动 AT-12 系列

### Pneumatic AT-12 Series

攻丝范围(scope) : M3-M12



**AT-12-1100**  
短臂垂直型 Vertical short arm



**ATU-12-1100**  
短臂万向型 Universal short arm type



**AT-12-1800**  
长臂垂直型 Vertical long arm type



**ATU-12-1800**  
长臂万向型 Long arm universal type

### 主要技术参数

型号(Model)	攻丝范围(Scope)	主轴转速 (Spindle speed)	工作半径 (Working radius)	标准配件 (Standard fitting)	工作方向 Working direction	重量(KG)
AT-12-1100	公制(Metric): M3- M12 英制(Inch): M12 1/8-1/2 管螺纹(G): 1/16-1/8	0-400转/分 RPM	1100MM	夹头(Chuck)M3-M12 一套 (A set)	垂直向下 Vertical downward	19KG
ATU-12-1100	公制(Metric): M3- M12 英制(Inch): M12 1/8-1/2 管螺纹(G): 1/16-1/8	0-400转/分 RPM	1100MM	夹头(Chuck)M3-M12 一套 (A set)	任意方向 Arbitrary direction	21KG
AT-12-1800	公制(Metric): M3- M12 英制(Inch): M12 1/8-1/2 管螺纹(G): 1/16-1/8	0-400转/分 RPM	1800MM	夹头(Chuck)M3-M12 一套 (A set)	垂直向下 Vertical downward	24KG
ATU-12-1800	公制(Metric): M3- M12 英制(Inch): M12 1/8-1/2 管螺纹(G): 1/16-1/8	0-400转/分 RPM	1800MM	夹头(Chuck)M3-M12 一套 (A set)	任意方向 Arbitrary direction	26KG



# 11 气动攻丝机系列 PNEUMATIC TAPPING MACHINE SERIES

## 气动 AT-16 系列

### Pneumatic AT-16 Series

攻丝范围(scope) : M3-M16



**AT-16-1100**  
短臂垂直型 Vertical short arm



**ATU-16-1100**  
短臂万向型 Universal short arm type



**AT-16-1800**  
长臂垂直型 Vertical long arm type



**ATU-16-1800**  
长臂万向型 Long arm universal type

主要技术参数

型号(Model)	攻丝范围(Scope)	主轴转速 (Spindle speed)	工作半径 (Working radius)	标准配件 (Standard fitting)	工作方向 (Working direction)	重量(KG)
<b>AT-16-1100</b>	公制(Metric): M3- M16 英制(Inch): 1/8-5/8 管螺纹(G): PT1/16-1/4	0-250转/分 RPM	1100MM	夹头(Chuck)M3-M16 任选6只 (Optional 6)	垂直向下 Vertical downward	25KG
<b>ATU-16-1100</b>	公制(Metric): M3- M16 英制(Inch): 1/8-5/8 管螺纹(G): PT1/16-1/4	0-250转/分 RPM	1100MM	夹头(Chuck)M3-M16 任选6只 (Optional 6)	任意方向 Arbitrary direction	28KG
<b>AT-16-1800</b>	公制(Metric): M3- M16 英制(Inch): 1/8-5/8 管螺纹(G): PT1/16-1/4	0-250转/分 RPM	1800MM	夹头(Chuck)M3-M16 任选6只 (Optional 6)	垂直向下 Vertical downward	32KG
<b>ATU-16-1800</b>	公制(Metric): M3- M16 英制(Inch): 1/8-5/8 管螺纹(G): PT1/16-1/4	0-250转/分 RPM	1800MM	夹头(Chuck)M3-M16 任选6只 (Optional 6)	任意方向 Arbitrary direction	35KG

# 12 气动攻丝机系列 PNEUMATIC TAPPING MACHINE SERIES

## 气动 AT-24 系列

### Pneumatic AT-24 Series

攻丝范围(scope) : M3-M24



**AT-24-1100**  
短臂垂直型 Vertical short arm



**ATU-24-1100**  
短臂万向型 Universal short arm type



**AT-24-1800**  
长臂垂直型 Vertical long arm type



**ATU-24-1800**  
长臂万向型 Long arm universal type

主要技术参数

型号(Model)	攻丝范围(Scope)	主轴转速 (Spindle speed)	工作半径 (Working radius)	标准配件 (Standard fitting)	工作方向 (Working direction)	重量(KG)
<b>AT-24-1100</b>	公制(Metric): M3- M24 英制(Inch): 1/8-7/8 管螺纹(G): PT1/16-1/2	0-250,0-90转/分 RPM	1100MM	夹头(Chuck)M3-M24 任选8只 (Optional 8)	垂直向下 Vertical downward	35KG
<b>ATU-24-1100</b>	公制(Metric): M3- M24 英制(Inch): 1/8-7/8 管螺纹(G): PT1/16-1/2	0-250,0-90转/分 RPM	1100MM	夹头(Chuck)M3-M24 任选8只 (Optional 8)	任意方向 Arbitrary direction	40KG
<b>AT-24-1800</b>	公制(Metric): M3- M24 英制(Inch): 1/8-7/8 管螺纹(G): PT1/16-1/2	0-250,0-90转/分 RPM	1800MM	夹头(Chuck)M3-M24 任选8只 (Optional 8)	垂直向下 Vertical downward	45KG
<b>ATU-24-1800</b>	公制(Metric): M3- M24 英制(Inch): 1/8-7/8 管螺纹(G): PT1/16-1/2	0-250,0-90转/分 RPM	1800MM	夹头(Chuck)M3-M24 任选8只 (Optional 8)	任意方向 Arbitrary direction	50KG



# 03 电动攻丝机系列 ELECTRIC TAPPING MACHINE SERIES

## 电动 ET-6 系列

### Electric ET-6 Series

攻丝范围(scope) : M2-M6



专为M2、M2.5、M3、M4、M5、M6小牙设计，适用于散热片，灯饰等产品的攻丝，效率是其他型号的6倍，而且不断丝锥。

Designed for M2, M2.5, M3, M4, M5, M6 small teeth design, suitable for heat sink, lighting and other products The tapping efficiency is 6 times than other models, and constantly tap.

**ET-6-1200**  
短臂垂直型 Vertical short arm



**ETU-6-1200**  
短臂万向型 Universal short arm type

主要技术参数

型号(Model)	攻丝范围(Scope)	主轴转速(Spindle speed)	功率(Power)	电源(Power Supply)	工作半径(Working radius)	标准配件(Standard fitting)	工作方向(Working direction)	重量(KG)
ET-6-1200	公制(Metric): M2- M6 英制(Inch): 1/8-1/4	0-480转/分 RPM	600W	220V 50HZ	1200MM	夹头(Chuck)M2-M6 一套5只 (A set of 5)	垂直向下 Vertical downward	26KG
ETU-6-1200	公制(Metric): M2- M6 英制(Inch): 1/8-1/4	0-480转/分 RPM	600W	220V 50HZ	1200MM	夹头(Chuck)M2-M6 一套5只 (A set of 5)	任意方向 Arbitrary direction	28KG

# 04 电动攻丝机系列 ELECTRIC TAPPING MACHINE SERIES

## 电动 ET-12 系列

### Electric ET-12 Series

攻丝范围(scope) : M3-M12



**ET-12-1200**  
短臂垂直型 Vertical short arm



**ETU-12-1200**  
短臂万向型 Universal short arm type



**ET-12-1800**  
长臂垂直型 Vertical long arm type



**ETU-12-1800**  
长臂万向型 Long arm universal type

主要技术参数

型号(Model)	攻丝范围(Scope)	主轴转速(Spindle speed)	功率(Power)	电源(Power Supply)	工作半径(Working radius)	标准配件(Standard fitting)	工作方向(Working direction)	重量(KG)
ET-12-1200	公制(Metric): M3- M12 英制(Inch): 1/8-1/2 管螺纹(G): PT1/16-1/8	0-400转/分 RPM	600W	220V 50HZ	1200MM	夹头(Chuck)M3-M12 任选7只 (Optional 7)	垂直向下 Vertical downward	28KG
ETU-12-1200	公制(Metric): M3- M12 英制(Inch): 1/8-1/2 管螺纹(G): PT1/16-1/8	0-400转/分 RPM	600W	220V 50HZ	1200MM	夹头(Chuck)M3-M12 任选7只 (Optional 7)	任意方向 Arbitrary direction	31KG
ET-12-1800	公制(Metric): M3- M12 英制(Inch): 1/8-1/2 管螺纹(G): PT1/16-1/8	0-400转/分 RPM	600W	220V 50HZ	1800MM	夹头(Chuck)M3-M12 任选7只 (Optional 7)	垂直向下 Vertical downward	35KG
ETU-12-1800	公制(Metric): M3- M12 英制(Inch): 1/8-1/2 管螺纹(G): PT1/16-1/8	0-400转/分 RPM	600W	220V 50HZ	1800MM	夹头(Chuck)M3-M12 任选7只 (Optional 7)	任意方向 Arbitrary direction	38KG



# 05 电动攻丝机系列 ELECTRIC TAPPING MACHINE SERIES

## 电动 ET-16 系列

### Electric ET-16 Series

攻丝范围(scope) : M3-M16



**ETU-16-1200**  
短臂万向型 Universal short arm type



**ET-16-1200**  
短臂垂直型 Vertical short arm



**ET-16-1800**  
长臂垂直型 Vertical long arm type



**ETU-16-1800**  
长臂万向型 Long arm universal type

主要技术参数

型号(Model)	攻丝范围(Scope)	主轴转速 (Spindle speed)	功率 (Power)	电源 Power Supply	工作半径 (Working radius)	标准配件 (Standard fitting)	工作方向 Working direction	重量(KG)
<b>ET-16-1200</b>	公制(Metric): M3- M16 英制(Inch): 1/8-5/8 管螺纹(G): PT1/16-1/4	0-300转/分 RPM	600W	220V 50HZ	1200MM	夹头(Chuck)M3-M16 任选6只 (Optional 6)	垂直向下 Vertical downward	28KG
<b>ETU-16-1200</b>	公制(Metric): M3- M16 英制(Inch): 1/8-5/8 管螺纹(G): PT1/16-1/4	0-300转/分 RPM	600W	220V 50HZ	1200MM	夹头(Chuck)M3-M16 任选6只 (Optional 6)	任意方向 Arbitrary direction	31KG
<b>ET-16-1800</b>	公制(Metric): M3- M16 英制(Inch): 1/8-5/8 管螺纹(G): PT1/16-1/4	0-300转/分 RPM	600W	220V 50HZ	1800MM	夹头(Chuck)M3-M16 任选6只 (Optional 6)	垂直向下 Vertical downward	35KG
<b>ETU-16-1800</b>	公制(Metric): M3- M16 英制(Inch): 1/8-5/8 管螺纹(G): PT1/16-1/4	0-300转/分 RPM	600W	220V 50HZ	1800MM	夹头(Chuck)M3-M16 任选6只 (Optional 6)	任意方向 Arbitrary direction	38KG

# 06 电动攻丝机系列 ELECTRIC TAPPING MACHINE SERIES

## 电动 ET-24 系列

### Electric ET-24 Series

攻丝范围(scope) : M6-M24



**ET-24-1350**  
短臂垂直型 Vertical short arm



**ETU-24-1350**  
短臂万向型 Universal short arm type



**ET-24-1800**  
长臂垂直型 Vertical long arm type



**ETU-24-1800**  
长臂万向型 Long arm universal type

主要技术参数

型号(Model)	攻丝范围(Scope)	主轴转速 (Spindle speed)	功率 (Power)	电源 Power Supply	工作半径 (Working radius)	标准配件 (Standard fitting)	工作方向 Working direction	重量(KG)
<b>ET-24-1350</b>	公制(Metric): M6- M24 英制(Inch): 3/16-1" 管螺纹(G): PT1/16-1/2	0-240转/分 RPM	1000W	220V 50HZ	1350MM	夹头(Chuck)M6-M24 任选8只 (Optional 8)	垂直向下 Vertical downward	50KG
<b>ETU-24-1350</b>	公制(Metric): M6- M24 英制(Inch): 3/16-1" 管螺纹(G): PT1/16-1/2	0-240转/分 RPM	1000W	220V 50HZ	1350MM	夹头(Chuck)M6-M24 任选8只 (Optional 8)	任意方向 Arbitrary direction	55KG
<b>ET-24-1800</b>	公制(Metric): M6- M24 英制(Inch): 3/16-1" 管螺纹(G): PT1/16-1/2	0-240转/分 RPM	1000W	220V 50HZ	1800MM	夹头(Chuck)M6-M24 任选8只 (Optional 8)	垂直向下 Vertical downward	60KG
<b>ETU-24-1800</b>	公制(Metric): M6- M24 英制(Inch): 3/16-1" 管螺纹(G): PT1/16-1/2	0-240转/分 RPM	1000W	220V 50HZ	1800MM	夹头(Chuck)M6-M24 任选8只 (Optional 8)	任意方向 Arbitrary direction	65KG



# 07 电动攻丝机系列 ELECTRIC TAPPING MACHINE SERIES

## 电动ET-30 系列 Electric ET-30 Series

攻丝范围(scope) : M6-M30

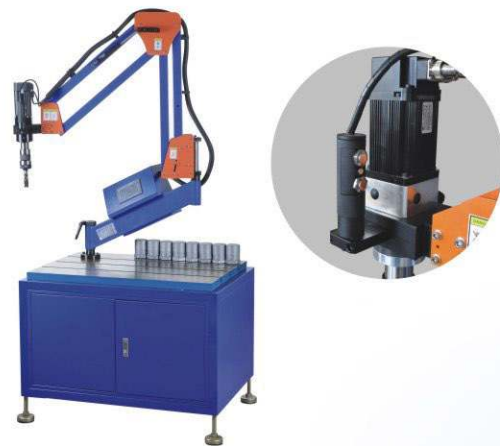


**ETU-30-1800**  
长臂万向型 Long arm universal type



**ETU-30-1350**  
短臂万向型 Universal short arm type

**ET-30-1350**  
短臂垂直型 Vertical short arm



**ET-30-1800**  
长臂垂直型 Vertical long arm type

**主要技术参数**

型号(Model)	攻丝范围(Scope)	主轴转速 (Spindle speed)	功率 (Power)	电源 Power Supply	工作半径 (Working radius)	标准配件 (Standard fitting)	工作方向 Working direction	重量(KG)
ET-30-1350	公制(Metric): M6- M30 英制(Inch): 3/16-1"1/4 管螺纹(G): PT1/16-3/4	0-200转/分 RPM	1000W	220V 50HZ	1350MM	夹头(Chuck)M6-M30 任选8只 (Optional 8)	垂直向下 Vertical downward	50KG
ETU-30-1350	公制(Metric): M6- M30 英制(Inch): 3/16-1"1/4 管螺纹(G): PT1/16-3/4	0-200转/分 RPM	1000W	220V 50HZ	1350MM	夹头(Chuck)M6-M30 任选8只 (Optional 8)	任意方向 Arbitrary direction	55KG
ET-30-1800	公制(Metric): M6- M30 英制(Inch): 3/16-1"1/4 管螺纹(G): PT1/16-3/4	0-200转/分 RPM	1000W	220V 50HZ	1800MM	夹头(Chuck)M6-M30 任选8只 (Optional 8)	垂直向下 Vertical downward	60KG
ETU-30-1800	公制(Metric): M6- M30 英制(Inch): 3/16-1"1/4 管螺纹(G): PT1/16-3/4	0-200转/分 RPM	1000W	220V 50HZ	1800MM	夹头(Chuck)M6-M30 任选8只 (Optional 8)	任意方向 Arbitrary direction	65KG

# 08 电动攻丝机系列 ELECTRIC TAPPING MACHINE SERIES

## 电动ET-36 系列 Electric ET-36 Series

攻丝范围(scope) : M8-M36



**短臂垂直型**  
Vertical short arm

**主要技术参数**

型号(Model)	攻丝范围(Scope)	主轴转速 (Spindle speed)	功率 (Power)	电源 Power Supply	工作半径 (Working radius)	标准配件 (Standard fitting)	工作方向 Working direction	重量(KG)
ET-36-1350	公制(Metric): M8- M36 英制(Inch): 5/16-1"1/2 管螺纹(G): PT1/8-1"	0-100转/分 RPM	2400W	220V 50HZ	1350MM	夹头(Chuck)M8-M36 任选8只 (Optional 8)	垂直向下 Vertical downward	70KG
ETU-36-1350	公制(Metric): M8- M36 英制(Inch): 5/16-1"1/2 管螺纹(G): PT1/8-1"	0-100转/分 RPM	2400W	220V 50HZ	1350MM	夹头(Chuck)M8-M36 任选8只 (Optional 8)	任意方向 Arbitrary direction	70KG

## 电动ET-48 系列 Electric ET-48 Series

攻丝范围(scope) : M10-M48



**主要技术参数**

型号(Model)	攻丝范围(Scope)	主轴转速 (Spindle speed)	功率 (Power)	电源 Power Supply	工作半径 (Working radius)	标准配件 (Standard fitting)	工作方向 Working direction	重量(KG)
ET-48-1350	公制(Metric): M10- M48 英制(Inch): 3/8-2" 管螺纹(G): PT1/8-1"1/2	0-60转/分 RPM	2400W	220V 50HZ	1350MM	夹头(Chuck)M10-M48 任选8只 (Optional 8)	垂直向下 Vertical downward	100KG
ETU-48-1350	公制(Metric): M10- M48 英制(Inch): 3/8-2" 管螺纹(G): PT1/8-1"1/2	0-60转/分 RPM	2400W	220V 50HZ	1350MM	夹头(Chuck)M10-M48 任选8只 (Optional 8)	任意方向 Arbitrary direction	100KG





柄体 (攻丝机连接杆)  
Handle (tapping machine connecting rod)



磁力座  
Magnetic seat



攻丝机支架支撑杆  
Tapping machine bracket strut



韩国UT丝锥  
South Korea UT tap



扭力夹头  
Torsion chuck



气动攻丝机主轴 (马达) M3-M12  
Pneumatic spindle tapping machine (motor) M3-M12



气动攻丝机主轴 (马达) M3-M16  
Pneumatic spindle tapping machine (motor) M3-M16



气动攻丝机主轴 (马达) M3-M24  
Pneumatic spindle tapping machine (motor) M3-M24



日本YAMAWA丝锥  
Japan YAMAWA tap



铸铁板工作台  
Cast iron plate workbench



攻丝机支架 工作半径1200mm  
Tapping machine support working radius of 1200 mm



攻丝机支架 工作半径2000mm  
Tapping machine support working radius of 2000 mm

● 国标丝锥、扭矩对照表 GB taps, torque control table

规格 mm Specifications	M1	M2	M3	M4	M5	M6	M8	M10	M12	M14	M16
扭矩 N.m torque	0.04	0.22	0.54	1.40	2.30	4.20	8.50	15.0	25.0	37.0	45.0
规格 mm Specifications	M18	M20	M22	M24	M27	M30	M33	M36	M39	M42	M45
扭矩 N.m torque	75.0	86.0	99.0	147	170	250	290	400	450	500	650
规格 mm Specifications	M48	M52	M56	M60	M64	M68	M72	M76	M80	—	—
扭矩 N.m torque	800	900	1200	1300	1600	1700	1900	2000	2200	—	—

● 国标螺孔、钻头直径对照表 International screw, drill diameter table

螺孔 Screw	M1	M2	M3	M4	M5	M6	M8	M10	M12	M14	M16
钻头直径 mm Drill diameter	0.75	1.6	2.5	3.3	4.2	5	6.8	8.5	10.2	12	14
螺孔 Screw	M18	M20	M22	M24	M27	M30	M33	M36	M39	M42	M45
钻头直径 mm Drill diameter	15.5	17.5	19.5	21	24	26.5	29.5	32	35	37.5	40.5
螺孔 Screw	M48	M52	M56	M60	M64	M68	M72	M76	M80	—	—
钻头直径 mm Drill diameter	43	47	50.5	54.5	58	62	66	70	74	—	—

**合作共赢 共创未来**

**WIN-WIN COOPERATION  
CREATE THE FUTURE**





## POWER TUNGSTEN CARBIDE



**2X LIFE FASTER**

Unifast TCT hole-saws has extremely sharp and powerful Tungsten carbide tipped cutting edges, Its exceptional design allows to run at higher feed rates and speed, creating holes of remarkable quality



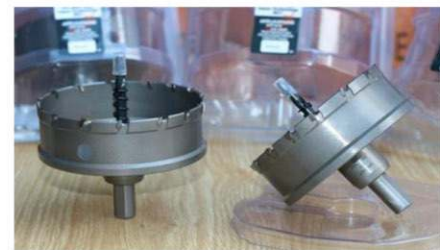
Recommended working depth is 5mm and 25mm depends on application and the best in drilling Stainless Steel sheet metal, thick metal, iron, aluminum, copper, tin, brass, acrylic, FRP, PVC and even more in ceramic.



CODE	DIA.mm	DEPTH
MCT-14	Ø14	5 mm
MCT-15	Ø15	5 mm
MCT-16	Ø16	25mm
MCT-17	Ø17	25mm
MCT-18	Ø18	25mm
MCT-19	Ø19	25mm
MCT-20	Ø20	25mm
MCT-21	Ø21	25mm
MCT-22	Ø22	25mm
MCT-23	Ø23	25mm
MCT-24	Ø24	25mm
MCT-25	Ø25	25mm
MCT-26	Ø26	25mm
MCT-27	Ø27	25mm
MCT-28	Ø28	25mm
MCT-29	Ø29	25mm
MCT-30	Ø30	25mm
MCT-31	Ø31	25mm
MCT-32	Ø32	25mm
MCT-33	Ø33	25mm
MCT-34	Ø34	25mm
MCT-35	Ø35	25mm
MCT-36	Ø36	25mm
MCT-37	Ø37	25mm
MCT-38	Ø38	25mm
MCT-39	Ø39	25mm
MCT-40	Ø40	25mm
MCT-41	Ø41	25mm
MCT-42	Ø42	25mm



CODE	DIA.mm	DEPTH
MCT-43	Ø43	25mm
MCT-44	Ø44	25mm
MCT-45	Ø45	25mm
MCT-46	Ø46	25mm
MCT-47	Ø47	25mm
MCT-48	Ø48	25mm
MCT-49	Ø49	25mm
MCT-50	Ø50	25mm
MCT-51	Ø51	25mm
MCT-52	Ø52	25mm
MCT-53	Ø53	25mm
MCT-54	Ø54	25mm
MCT-55	Ø55	25mm
MCT-56	Ø56	25mm
MCT-57	Ø57	25mm
MCT-58	Ø58	25mm
MCT-59	Ø59	25mm
MCT-60	Ø60	25mm
MCT-61	Ø61	25mm
MCT-62	Ø62	25mm
MCT-63	Ø63	25mm
MCT-64	Ø64	25mm
MCT-65	Ø65	25mm
MCT-66	Ø66	25mm
MCT-67	Ø67	25mm
MCT-68	Ø68	25mm
MCT-69	Ø69	25mm
MCT-70	Ø70	25mm
MCT-71	Ø71	25mm



CODE	DIA.mm	DEPTH
MCT-72	Ø72	25mm
MCT-73	Ø73	25mm
MCT-74	Ø74	25mm
MCT-75	Ø75	25mm
MCT-76	Ø76	25mm
MCT-77	Ø77	25mm
MCT-78	Ø78	25mm
MCT-79	Ø79	25mm
MCT-80	Ø80	25mm
MCT-81	Ø81	25mm
MCT-82	Ø82	25mm
MCT-83	Ø83	25mm
MCT-84	Ø84	25mm
MCT-85	Ø85	25mm
MCT-86	Ø86	25mm
MCT-87	Ø87	25mm
MCT-88	Ø88	25mm
MCT-89	Ø89	25mm
MCT-90	Ø90	25mm
MCT-91	Ø91	25mm
MCT-92	Ø92	25mm
MCT-93	Ø93	25mm
MCT-94	Ø94	25mm
MCT-95	Ø95	25mm
MCT-96	Ø96	25mm
MCT-97	Ø97	25mm
MCT-98	Ø98	25mm
MCT-99	Ø99	25mm
MCT-100	Ø100	25mm